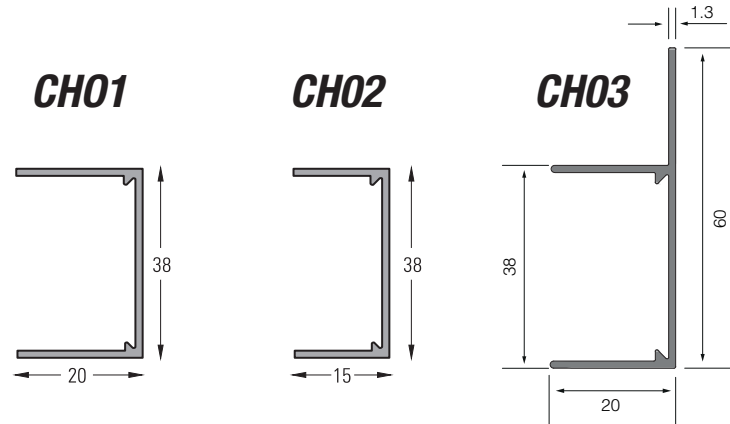


**APPLICATION**

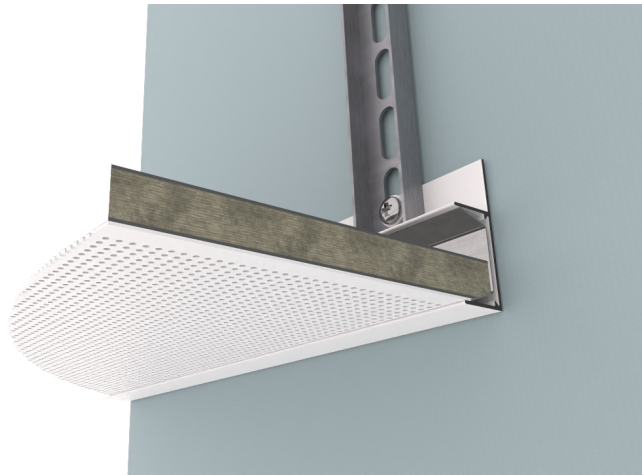
Type CH trims are used to create a crisp perimeter detail where cut metal ceiling tile systems abut walls, partitions or upstands. The channel feature is designed to accept standard hold down wedges and clips to retain cut tiles. Type CH trims can be factory curved on plan to suit both concave and convex walls. They can also be factory formed into column rings.

**PRODUCT INFORMATION**

Supplied in 3000mm lengths, extruded from architectural grade aluminium alloy to BS 1474. The standard finishes are white polyester powder coating to RAL 9010, 20% Gloss, or to order in a full palette of RAL colours, to match and enhance any interior scheme. Unpainted trims also available for onsite painting/spraying, please check with your paint supplier for any additional primer products that may be required. QIC cannot accept any responsibility for the painted finish of products supplied unpainted. Non-standard lengths, factory curving and alternative factory applied finishes are available to special order. Wedglock cleats to form straight joints, internal and external corners and abutment details when used with CH01, CH02 and CH03 are also available to order separately.



CH03



CH01

