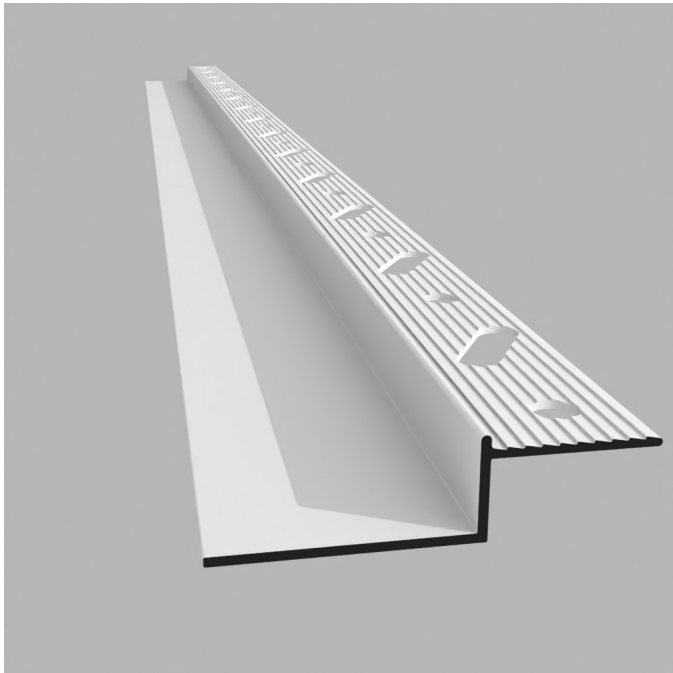


APPLICATION

Type ST trims are used to create recessed skirting details in partitions and dry lined walls. Type ST trims are specifically designed to be adhesive fixed at their base to avoid visible fixings. Type ST trims can be factory curved to suit both concave and convex walls.

PRODUCT INFORMATION

Supplied in 3000mm lengths, extruded from architectural grade aluminium alloy to BS 1474. Pre-punched with diagonal fixing slots and holes suitable for fixing by drywall screws. The standard finishes are white polyester powder coating to RAL 9010, 20% Gloss, or to order in a full palette of RAL colours, to match and enhance any interior scheme. Unpainted trims also available for onsite painting/spraying, please check with your paint supplier for any additional primer products that may be required. QIC cannot accept any responsibility for the painted finish of products supplied unpainted.



ST30 ST40 ST50 ST75 ST100

