

QIC

BLIND BOX



QIC Blind Box is a brand new development on the traditional bulkhead constructed in timber and plasterboard and then decorated.

Blind Box works in a similar way by providing a universal housing that accommodates most makes of blinds with added options of a closure plate to conceal the blinds further. Options include a ceiling flange that integrates with a grid suspended ceiling system and additional taped leg for seamless integration within a plasterboard ceiling. Blind Box provides a secure fixing with brackets to suit.

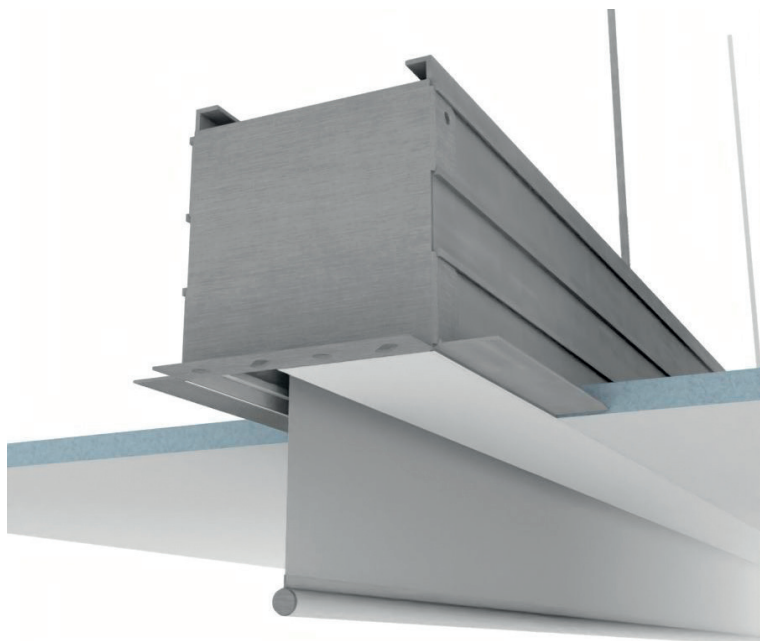
Blind Box is an extruded one-piece aluminium profile offering the further benefits of a clean, sophisticated finish, significant savings on installation time and cost effectiveness and a reduction in site waste.

Blind Box is designed to be installed to a completed shell before ceiling construction. When installed, Blind Box creates a universal recessed housing concealing the retracted blinds and provides the perimeter ceiling edge in one integral profile.

With no further requirement for drilling on site the blinds are simply and cleanly fitted just before handover.

Blind Box range

-  **100 x 100**
-  **Special projects**
-  **Bespoke sizes**



Pre-engineered profiles that provide a sharp finish to tile or plasterboard ceilings while creating the ability to integrate curtains or blinds. Our blind box solution is pre-finished at the factory, powder coated to any RAL colour saving time on plastering, sanding and painting.

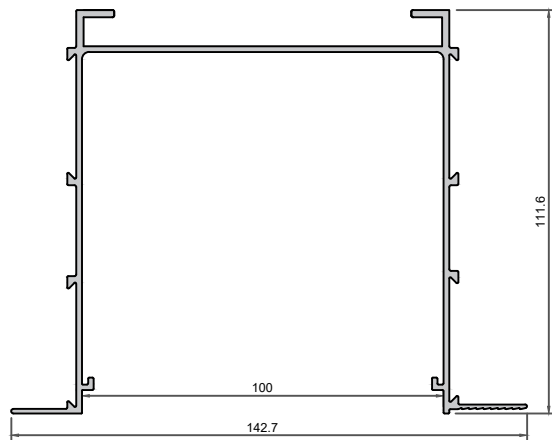
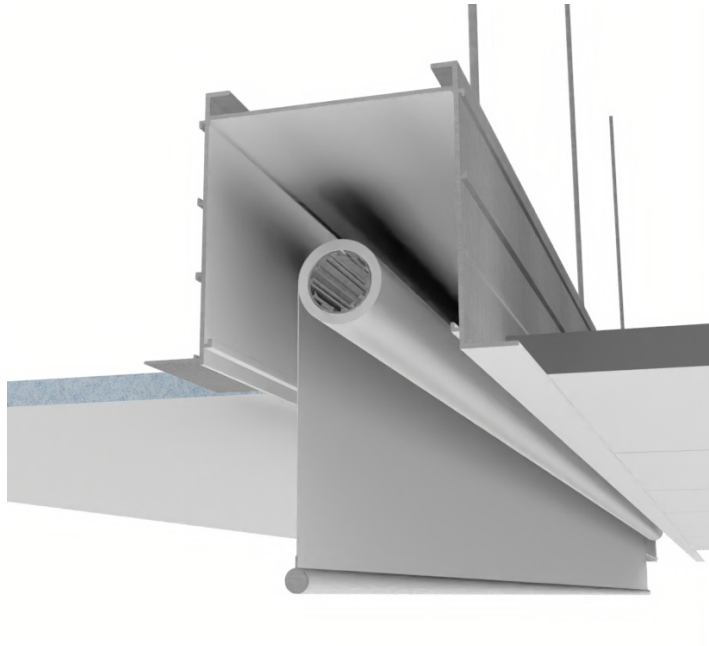
Off this job and on to the next job 4 times faster !



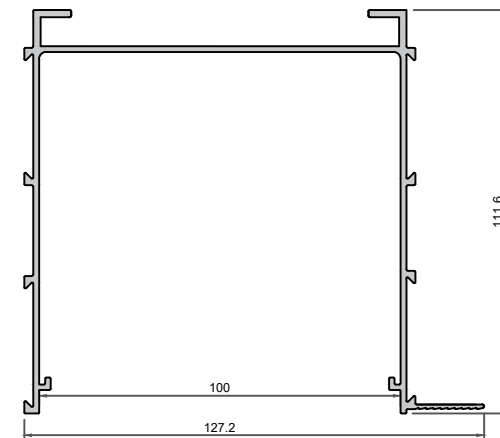
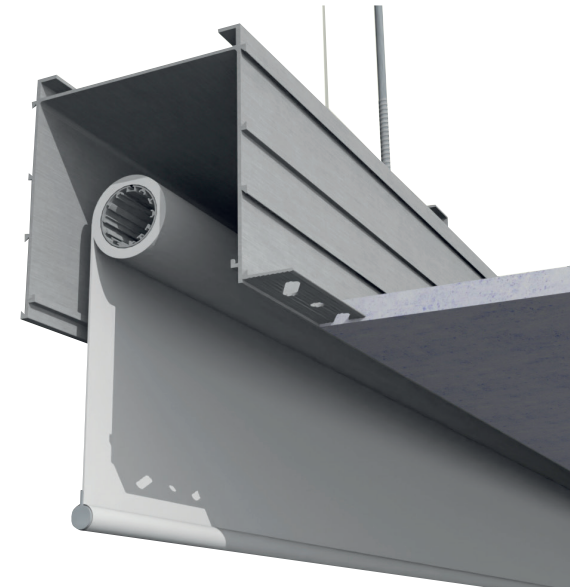
The QIC Blind Box is a pre-engineered perimeter solution allowing full and clean integration from wall to any ceiling system. The Blind Box can be used to disguise blinds and feature lighting or just as a shadow line visual solution.

With the various options, the Blind Box provides a neat integrated finish with plasterboard, metal, mineral fibre, or wood tile ceilings.

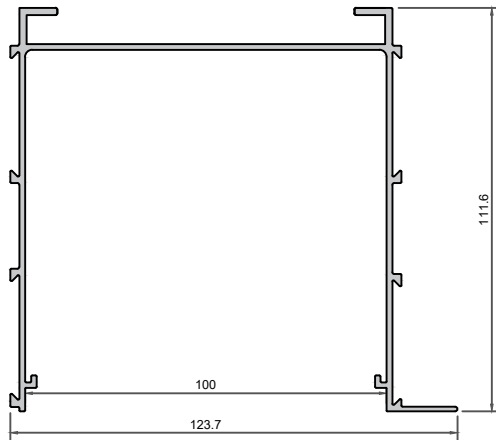
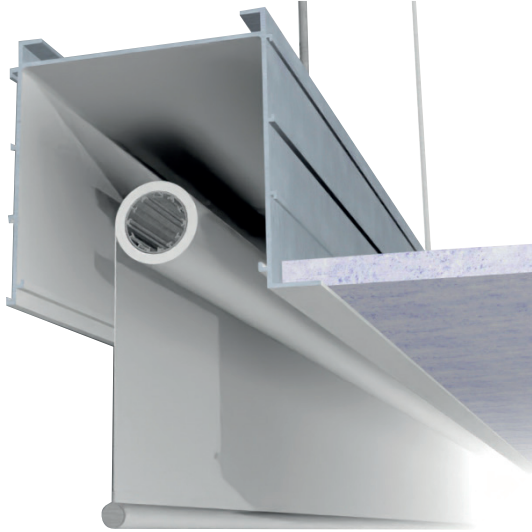
BBOX100TP
Full Ceiling Tile to Plasterboard



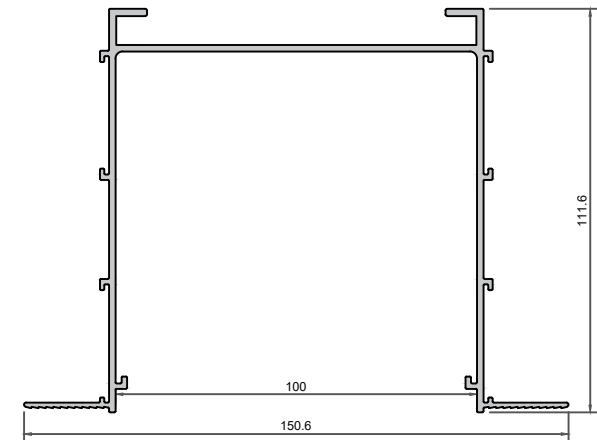
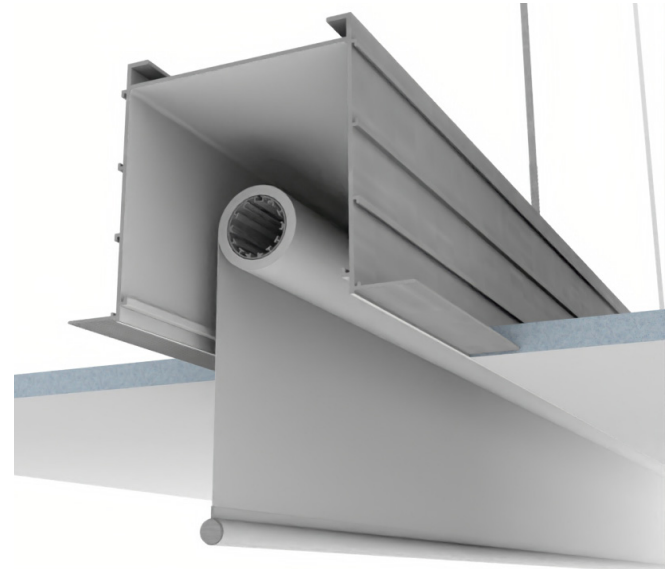
BBOX100WP
Wall to Plasterboard



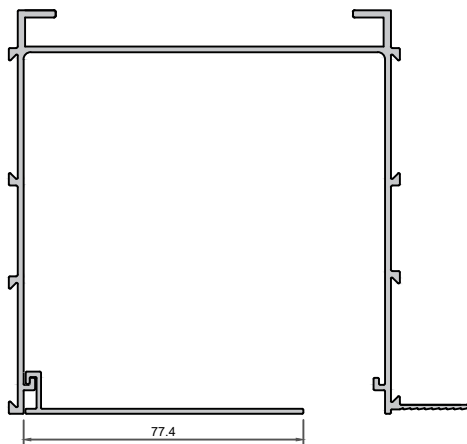
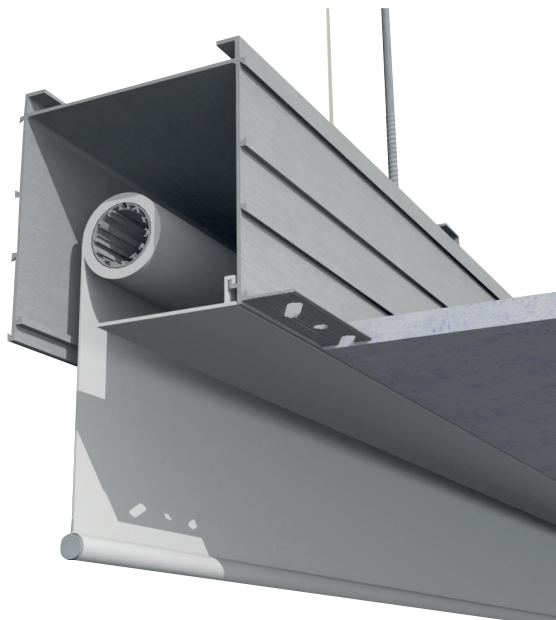
BBOX100WT
Wall to full Ceiling Tile



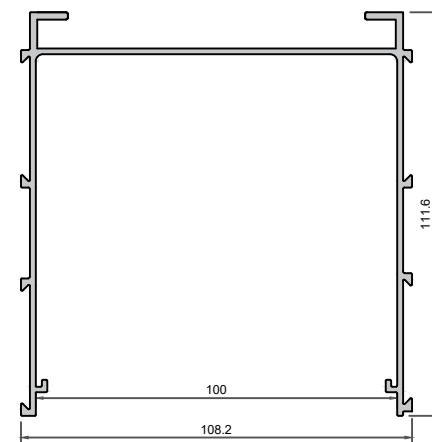
BBOX100PB
Plasterboard to Plasterboard



BBOX100
Optional easy-fit cover plate



BBOX100 / NO RETURN



Blind Box represents a significant saving in on-site time and cost and for this reason alone is installed as a continuous ceiling perimeter both where blinds are and are not required.

- Decrease site labour and hours
- Less wastage and excess material
- One-piece profile combines bulkhead and perimeter trim
- Brackets square and millimetre perfect
- Removes reliance on installer
- Reduce point loadings

Blind Box will enhance your project with its speed of installation, aesthetics, less mess and cost saving features. Blind Box replaces the traditional bulkhead by providing a universal housing that suits blinds from most manufacturers with many benefits for the Specifier, the Contractor and the Client.



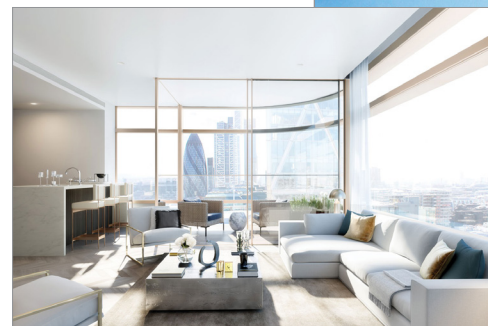
Foster + Partners for Brookfield Multiplex
Height: 175m GIA: 39,900 m2

QIC Trims, a leading manufacturer of trims for the interior fit-out sector, has designed window fitting solutions for one of the tallest residential projects in London - Foster + Partners' 50-storey Principal Tower in Shoreditch.

The company helped the architectural team design and extrude in excess of 5,000 linear metres of bespoke Blind Box housing for roller blinds and curtains in the development's one and two-bedroom apartments. The product had to be turned around efficiently and quickly so as not to

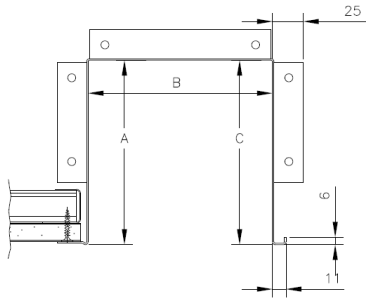
impact a tight site programme. Further projects are now in the pipeline with the development team.

Principal Tower is part of Principal Place, a mixed-use development on the edge of the City of London in the borough of Hackney. At 175 metres, it is one of London's tallest residential buildings. The relationship between the creative, formerly industrial east end and Britain's financial centre is expressed in the tower's massing, which appears as three slim volumes.

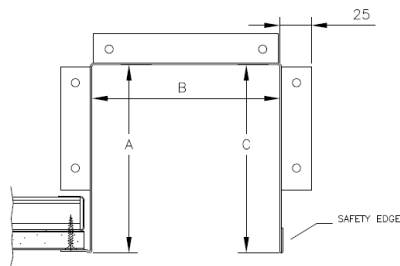


RAL - full colour range

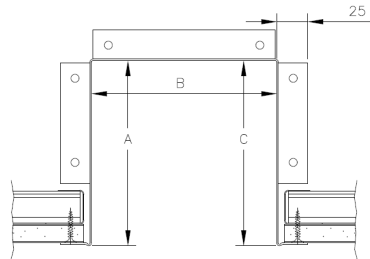




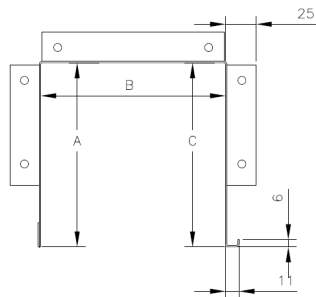
Manufactured from Steel or Aluminium, safety edge c/w j channel. Joining plates and can be powder coated any Ral colour.



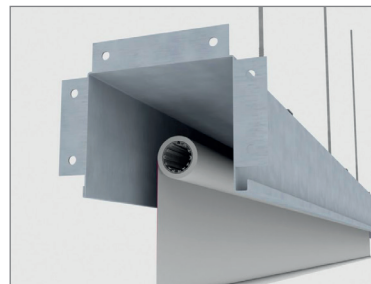
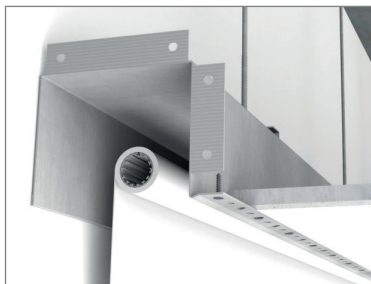
Manufactured from Steel or Aluminium, safety edge and taped edge. Joining plates and can be powder coated any Ral colour.



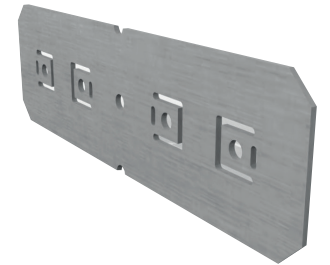
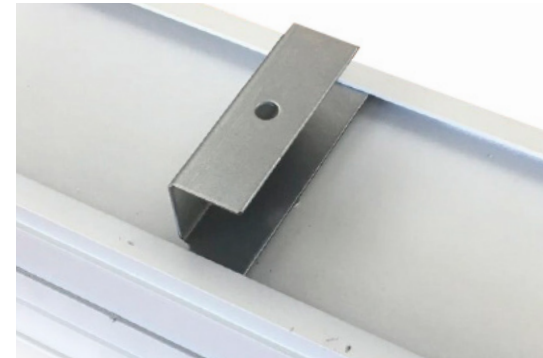
Manufactured from Steel or Aluminium, taped edge x 2. Joining plates and can be powder coated any Ral colour.



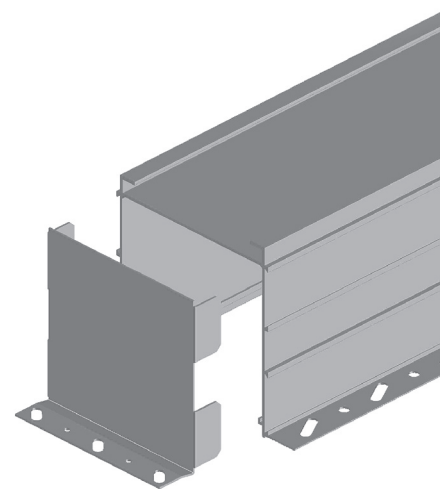
Manufactured from Steel or Aluminium, safety edge c/w j channel. Joining plates and can be powder coated any Ral colour.



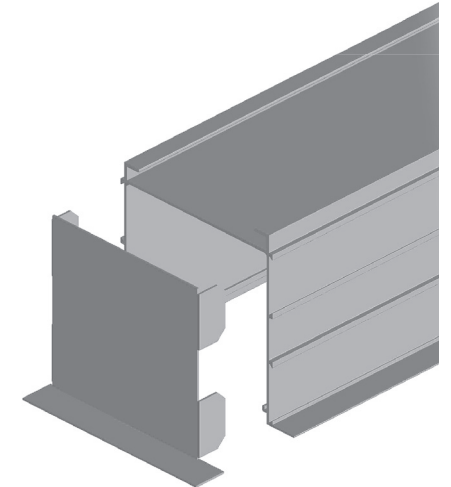
Suspension Brackets and Cleats for joining multiple lengths



Blindbox End Caps

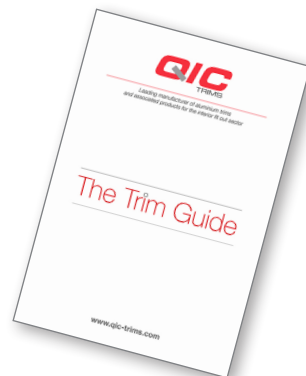
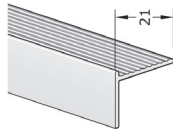
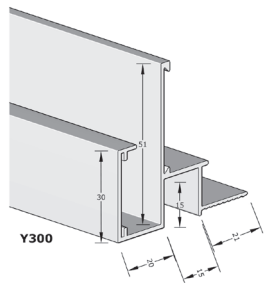


WALL TO PLASTERBOARD ENDCAP DETAIL



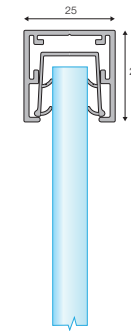
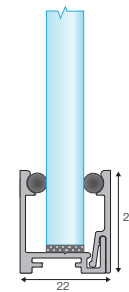
WALL TO CEILING PANEL ENDCAP DETAIL

QIC - Dry Lining & Suspended Ceilings Trims



The Trim Guide available separately

Partition SYSTEMS



QIC Partitions Brochure set available separately



QicTrims Ltd - Radclive Road,
Gawcott, Bucks, MK18 4BL (UK)

T: +44 (0)1280 818950

E: sales@qic-trims.com



www.qic-trims.com